

Saves your time and cost of packaging material

- Easy to operate
- Easy to maintain
- Economical in daily use
- Solid design
- Optional features

General technical Specifications

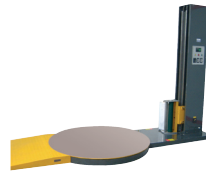
Turning Speed:	Adjustable 1 – 27 rotations/ min.
Film Carriage Vertical Speed:	Adjustable 1 – 4 meters/ min.
Packaging Material:	Stretch Film
Coil width:	500 mm.
Coil diameter:	250 mm.
Core diameter:	75 mm.

2101
2102
2501
2502
DR

WRA 2101

- Electro mechanical break

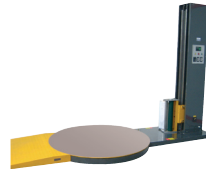
Turntable dimension:	1600 mm.
Max. pallet size (LxWxH):	800 x 1200 x 2100 mm.
Max. pallet weight:	2000 kg.
Power:	230 Volt, 50 Hz, 1.5 kW
Machine dimensions (LxWxH):	2650 x 1610 x 2410 mm.
Machine Weight:	750 kg.



WRA 2102

- Film Pre-Stretch up to 290%

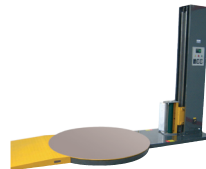
Turntable dimension:	1600 mm.
Max. pallet size (LxWxH):	800 x 1200 x 2100 mm.
Max. pallet weight:	2000 kg.
Power:	230 Volt, 50 Hz, 1.5 kW
Machine dimensions (LxWxH):	2650 x 1610 x 2410 mm.
Machine Weight:	760 kg.



WRA 2501

- Electro mechanical break

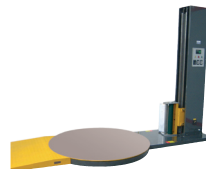
Turntable dimension:	1600 mm.
Max. pallet size (LxWxH):	800 x 1200 x 2400 mm.
Max. pallet weight:	2000 kg.
Power:	230 Volt, 50 Hz, 1.5 kW
Machine dimensions (LxWxH):	2650 x 1610 x 2700 mm.
Machine Weight:	830 kg.



WRA 2502

- Film Pre-Stretch up to 290%

Turntable dimension:	1600 mm.
Max. pallet size (LxWxH):	800 x 1200 x 2400 mm.
Max. pallet weight:	2000 kg.
Power:	230 Volt, 50 Hz, 1.5 kW
Machine dimensions (LxWxH):	2650 x 1610 x 2700 mm.
Machine Weight:	840 kg.



WRA DR

- Ramp for WRA 2100 and 2500 models

Dimensions (LxWxH):	1600 x 1000 x 80 mm.
Weight:	80 kg.



Saves your time and cost of packaging material

- Easy to operate
- Easy to maintain
- Economical in daily use
- Solid design
- Optional features

General technical Specifications

Turning Speed:	Adjustable 1 – 27 rotations/ min.
Film Carriage Vertical Speed:	Adjustable 1 – 4 meters/ min.
Packaging Material:	Stretch Film
Coil width:	500 mm.
Coil diameter:	250 mm.
Core diameter:	75 mm.

2801
2802
2803
2804

WRA 2801

- Rotating arm
- Automatic film fixing and cutting
- Electro mechanical break

Max. pallet size (LxWxH):	1200 x 1200 x 2800 mm.
Max. pallet weight:	2000 kg.
Power:	230 Volt, 50 Hz, 5 kW
Machine dimensions (LxWxH):	3800 x 4600 x 3680 mm.
Machine Weight:	1650 kg.



WRA 2802

- Rotating arm
- Automatic film fixing and cutting
- Film Pre-Stretch up to 290%

Max. pallet size (LxWxH):	1200 x 1200 x 2800 mm.
Max. pallet weight:	2000 kg.
Power:	230 Volt, 50 Hz, 5 kW
Machine dimensions (LxWxH):	3800 x 4600 x 3680 mm.
Machine Weight:	1660 kg.



WRA 2803

- Rotating arm
- Manual film fixing and cutting
- Electro mechanical break

Max. pallet size (LxWxH):	1200 x 1200 x 2400 mm.
Max. pallet weight:	2000 kg.
Power:	230 Volt, 50 Hz, 5 kW
Machine dimensions (LxWxH):	3800 x 4600 x 3680 mm.
Machine Weight:	1500 kg.



WRA 2804

- Rotating arm
- Manual film fixing and cutting
- Film Pre-Stretch up to 290%

Max. pallet size (LxWxH):	1200 x 1200 x 2400 mm.
Max. pallet weight:	2000 kg.
Power:	230 Volt, 50 Hz, 5 kW
Machine dimensions (LxWxH):	3800 x 4600 x 3680 mm.
Machine Weight:	1510 kg.



Saves your time and cost of packaging material

- Easy to operate
- Easy to maintain
- Economical in daily use
- Solid design
- Optional features

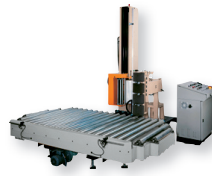
General technical Specifications

Turning Speed:	Adjustable 1 – 27 rotations/ min.
Film Carriage Vertical Speed:	Adjustable 1 – 4 meters/ min.
Packaging Material:	Stretch Film
Coil width:	500 mm.
Coil diameter:	250 mm.
Core diameter:	75 mm.

WRA 3001

- 7 meters driven roller conveyor
- Electro mechanical break

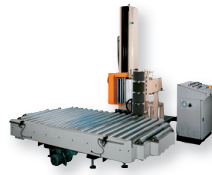
Disc dimension:	1600 mm.
Max. pallet size (LxWxH):	800 x 1200 x 2400 mm.
Max. pallet weight:	2000 kg.
Power:	230 Volt, 50 Hz, 5 kW
Machine dimensions (LxWxH):	9000 x 1600 x 3100 mm.
Machine Weight:	1850 kg.



WRA 3002

- 7 meters driven roller conveyor
- Film Pre-Stretch up to 290%

Disc dimension:	1600 mm.
Max. pallet size (LxWxH):	800 x 1200 x 2400 mm.
Max. pallet weight:	2000 kg.
Power:	230 Volt, 50 Hz, 5 kW
Machine dimensions (LxWxH):	9000 x 1600 x 3100 mm.
Machine Weight:	1860 kg.



WRA 125

- Manual pallet wrapping device

Width: 125 mm.
Weight: 0.5 kg.



WRA 500

- Manual pallet wrapping device

Width: 300 – 500 mm.
Weight: 1.5 kg.



